

# Agency Snapshot

EDUCATIONAL SERVICE DISTRICT 112



*Serving children, schools  
and communities*



*For more than 46 years, school districts have counted on Educational Service District 112 for essential services. Working collectively with our school and community partners, we bring equity and opportunity to students of Southwest Washington and beyond.*

## Mission

Who are we, and what is our purpose? The answers to those questions are defined in three key focus areas:

1. We deliver programs that produce successful outcomes for students and teachers.
2. We help save districts money so more time and resources can be directed to the classroom.
3. We help build healthy communities that improve the quality of life and contribute to the vitality of individuals and families.

*We serve over 100,000 K–12 students in 30 public school districts, 19 state-approved private schools and two state schools.*

## Who We Serve

The following is a list of the public school districts and state schools within our region:

Battle Ground 360.885.5300	Kelso 360.501.1900	Ocean Beach 360.642.3739	Washougal 360.954.3000
Camas 360.335.3000	Klickitat 509.369.4145	Ridgefield 360.619.1300	White Salmon Valley 509.493.1500
Castle Rock 360.501.2940	La Center 360.263.2131	Roosevelt 509.384.5462	Wishram 509.748.2551
Centerville 509.773.4893	Longview 360.575.7000	Skamania 509.427.8239	Woodland 360.841.2700
Evergreen 360.604.4000	Lyle 509.365.2191	Stevenson-Carson 509.427.5674	Washington State School for the Blind 360.696.6321
Glenwood 509.364.3438	Mill A 509.538.2522	Toutle Lake 360.274.6182	Washington School for the Deaf 360.696.6525
Green Mountain 360.225.7366	Mount Pleasant 360.385.3371	Trout Lake 509.395.2571	Washington State Center for Childhood Deafness and Hearing Loss 360.696.6525
Hockinson 360.448.6400	Naselle-Grays River Valley 360.484.7121	Vancouver 360.313.1000	
Kalama 360.673.5282		Wahkiakum 360.795.3971	

We also serve in other corners of the state through the ESD Network. Special education services, school construction management, communication and technology training are a few examples.

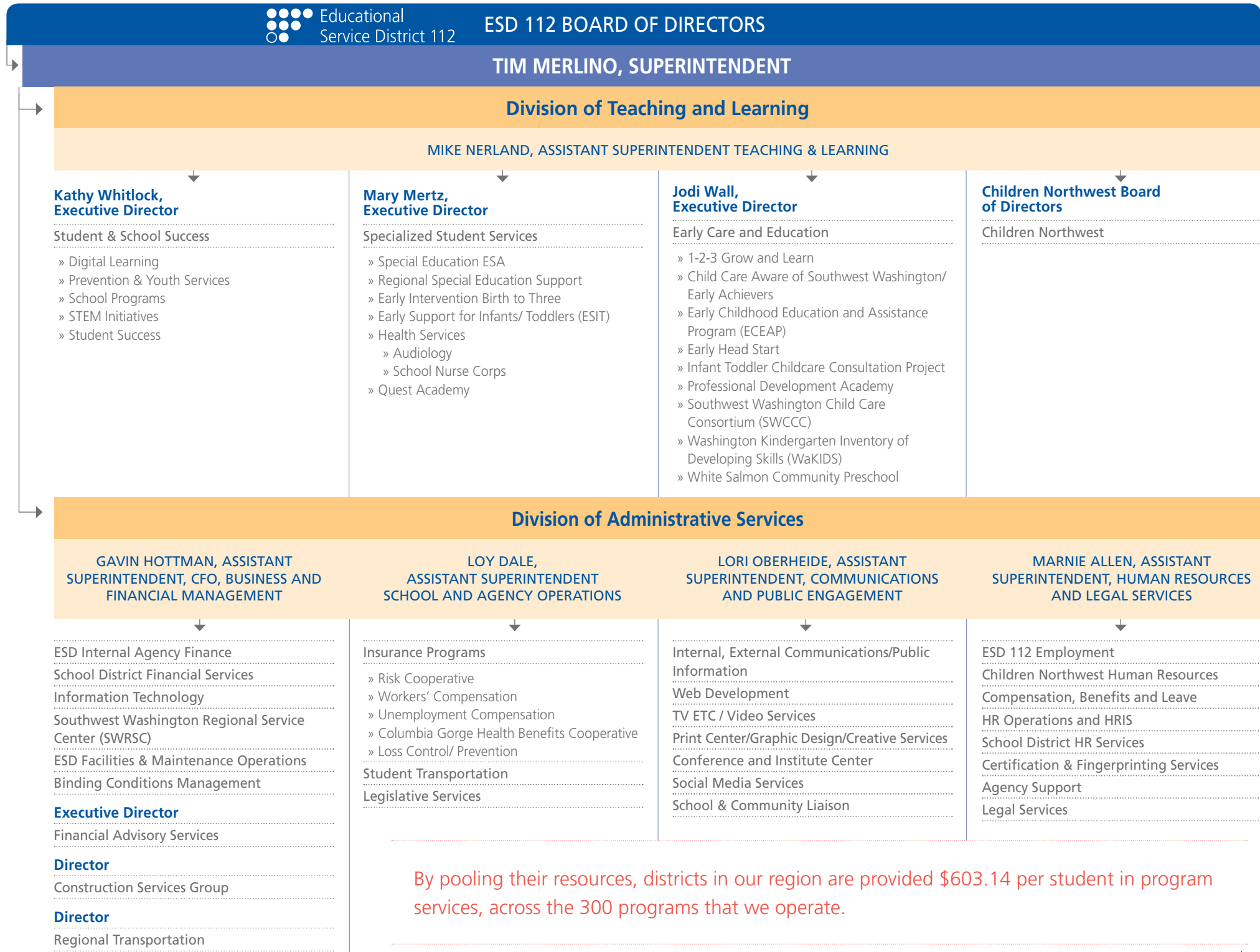


# Our Programs & Services

We add value to education through our 300+ programs and services. We've dedicated our legacy to creating innovative, quality programs that respond to unique requests from large and small school districts.

## Our focus assures support on two fronts:

1. Teaching and learning support to help strengthen instruction and improve student achievement
2. Business and administrative expertise to help support district management and operations functions





## Board of Directors

ESD 112 is governed by a seven-member board. Elected by local school board members throughout the six-county service region, these volunteers are strong education advocates in our communities.



### DISTRICT 1: DR. RICHARD GRAHAM

Represents Kelso, Kalama, Woodland, Green Mountain, La Center and Battle Ground School Districts



### DISTRICT 2: RAINER HOUSER

Represents Ocean Beach, Naselle-Grays River Valley, Wahkiakum, Longview, Castle Rock, Toutle Lake and Kelso School Districts



### DISTRICT 3: STEVE WRIGHTSON

Represents Hockinson, Battle Ground and Evergreen School Districts



### DISTRICT 4: PATRICIA KELLOGG

Represents Battle Ground, Ridgefield and Vancouver School Districts



### DISTRICT 5: MARILYN KOENNINGER

Represents Vancouver School District



### DISTRICT 6: DARLENE STICKEL

Represents Evergreen School District



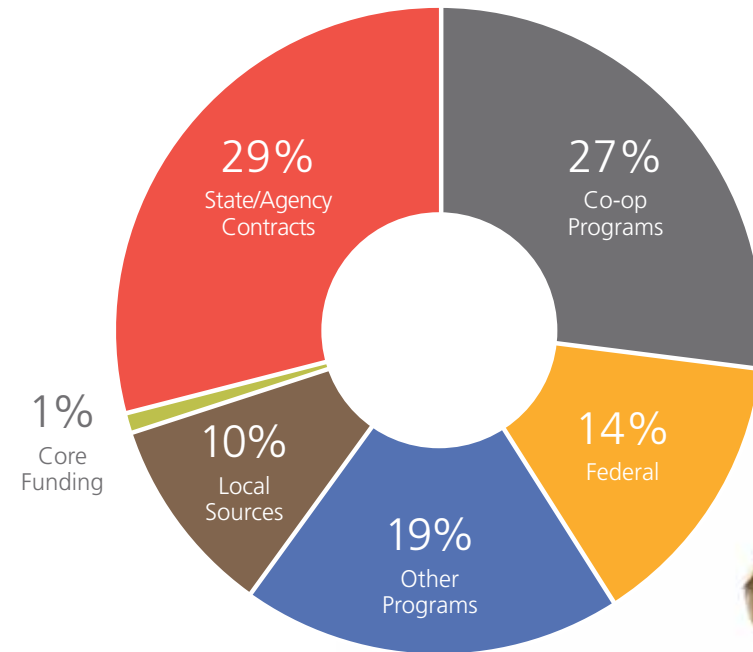
### DISTRICT 7: ANN CAMPBELL

Represents Camas, Centerville, Evergreen, Glenwood, Klickitat, Lyle, Mill A, Mount Pleasant, Roosevelt, Skamania, Stevenson-Carson, Trout Lake, Washougal, White Salmon Valley, and Wishram School Districts

## Financial Resources

While ESD 112 is an essential part of state and regional education services, annual state funding for basic operational expenses is minimal. **ESD 112 receives just over 2% of its \$51 million budget from the state.** However, the ESD uses that seed money to secure collaborative grants, manage fee-for-service partnerships and operate resourceful cooperatives and trusts. In fact, **for every \$1 invested in core funding, the ESD provides nearly \$100 in services!** That's a remarkable return on the state's investment.

## Resource Distribution\*



District participation in cooperatives and fee-for-service programs total almost \$34 million—more than doubling in the last nine years.

\* 2014 percentages



Our bus drivers transported students a total of 910,716 miles in 2014-15 over our 6,500 square mile region in Southwest Washington.



## How To Find Us

### MAIN OFFICE

Educational Service District 112  
2500 NE 65th Avenue, Vancouver, WA 98661-6812  
[www.esd112.org](http://www.esd112.org)

PH 360.750.7500  
FAX 360.750.9706  
TDD 360.750.7510

### COWLITZ COUNTY FIELD OFFICE—YOUTH PROGRAMS

1217 14th Avenue, Longview, WA 98632

PH 360.355.3119  
FAX 360.906.0089